

JAMBOREE® 2012

FLEETWOOD RV | CLASS C GAS



Powder Puff



Red Jasper



Ultramarine Ash

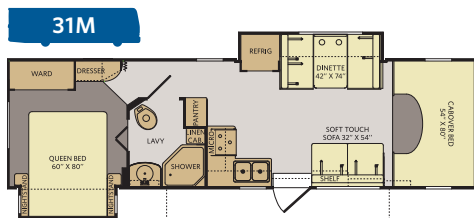


Standard

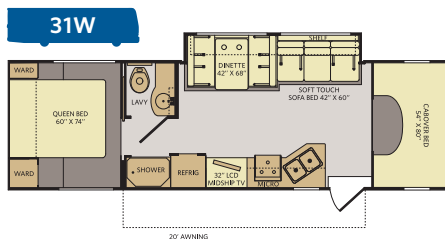
TOP FEATURES

- Glazed Hardwood Cabinet Doors With Hidden Hinges
- Soft-Touch Ceiling
- High-Gloss Exterior Fiberglass
- Full Basement Storage
- Flexsteel® Furniture
- Corian® Countertops
- Full-body Paint (Optional)
- PEX Plumbing System

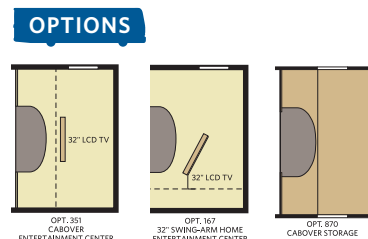
BASHFUL BEIGE	STERLING MIDNIGHT	SUNBAKED DESERT	CABINETRY
			TOASTED CHESTNUT
			BUTTERSCOTCH SPICE



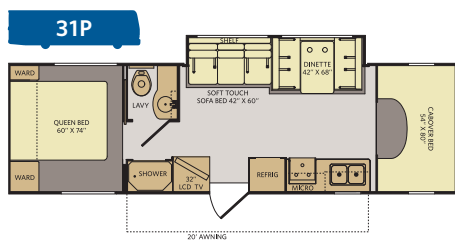
INTERIOR STORAGE CAPACITY: 126 CU. FT.
EXTERIOR STORAGE CAPACITY: 110 CU. FT.
Available options: 027, 079, 084, 121, 167, 351, 664



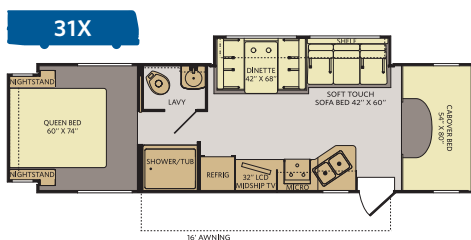
INTERIOR STORAGE CAPACITY: 74 CU. FT.
EXTERIOR STORAGE CAPACITY: 126 CU. FT.
Available options: 027, 084, 121, 664, 870



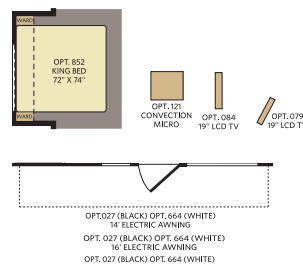
OPT. 351 CABOVER ENTERTAINMENT CENTER
OPT. 167 32" LCD TV
OPT. 177 32" SWING-ARM HOME ENTERTAINMENT CENTER
OPT. 870 CABOVER STORAGE CABINET



INTERIOR STORAGE CAPACITY: 106 CU. FT.
EXTERIOR STORAGE CAPACITY: 103 CU. FT.
Available options: 027, 084, 121, 664, 852, 870



INTERIOR STORAGE CAPACITY: 74 CU. FT.
EXTERIOR STORAGE CAPACITY: 126 CU. FT.
Available options: 027, 084, 121, 664, 870



OPT. 852 KING BED 72" X 74"
OPT. 121 CONNECTION MICRO
OPT. 084 19" LCD TV
OPT. 079 19" LCD TV
OPT.027 (BLACK) OPT. 664 (WHITE) 16" ELECTRIC AWNING
OPT. 027 (BLACK) OPT. 664 (WHITE) 16" ELECTRIC AWNING
OPT. 027 (BLACK) OPT. 664 (WHITE) 20" ELECTRIC AWNING

WEIGHTS & MEASUREMENTS

CHASSIS	FORD*			
	31M	31P	31W	31X
MODELS				
Engine Displacement (liters)	6.8	6.8	6.8	6.8
Wheelbase (inches)	218"	214"	214"	214"
GVWR (lbs) ¹	14,500	14,500	14,500	14,500
Front GAWR (lbs) ²	5,000	5,000	5,000	5,000
Rear GAWR (lbs) ²	9,500	9,500	9,500	9,500
GCWR (lbs) ³	19,500	19,500	19,500	19,500
Hitch Rating Weight (lbs) [†]	5,000	5,000	5,000	5,000
Tongue Weight (lbs) [†]	350	350	350	350
Fuel Capacity (gal)	55	55	55	55

FORD E450 CHASSIS

Model: Ford® E450
Engine: 6.8L Triton V10
Transmission: 5-Speed Automatic w/Overdrive

Alternator: 120 Amp
Torque: 420 lb-ft @ 3,250 RPM
Horsepower: 305HP

DIMENSIONS & CAPACITIES

MODELS	31M	31P	31W	31X
Overall Length ⁴	32' 5.5"	31' 7.5"	31' 7.5"	31' 7.5"
Overall Height (with A/C)	11' 6"	11' 6"	11' 6"	11' 6"
Overall Width (maximum) ^{5,6}	102"	102"	102"	102"
Interior Height (maximum)	82"	82"	82"	82"
Interior Width (maximum)	96"	96"	96"	96"
Fresh Water Holding Tank (gal)	60	50	60	60
Grey Water Holding Tank (gal)	35	35	37	37
Black Water Holding Tank (gal)	35	36	36	36
Appliance Propane Tank (gal) (WC) ⁷	14	14	14	14
Water Heater Tank (gal)	6	6	6	6

Liquid Weight Reference:

Water (gal) = (8.3 lbs/3.8 kgs) Fuel (gal) = (6.1 lbs/2.8 kgs) Propane (gal) = (4.2 lbs/1.9 kgs)

Metric Conversion:

Multiply pounds x 0.453 to obtain kilograms. Multiply gallons x 3.785 to obtain liters. Multiply liters x 61 to obtain cubic inches.

- GVWR (Gross Vehicle Weight Rating) is the maximum permissible weight of this fully loaded motor home. The GVWR is equal to or greater than the sum of the (UVW) unloaded vehicle weight plus the (OCCC) occupant cargo-carrying capacity.*
- GAWR (Gross Axle Weight Rating) is the maximum permissible loaded weight a specific axle is designed to carry.
- GCWR (Gross Combined Weight Rating) is the value specified by the motor home manufacturer as the maximum allowable loaded weight of this motor home with its towed vehicle. Towing and braking capacities may be different. Refer to Fleetwood and chassis manufacturer's manuals for complete information.
- Length measured from front bumper to rear bumper (excludes accessories).
- Excludes safety equipment and awnings.
- Motor homes feature a body width over 96" which will restrict your access to certain roads. Before purchasing, you should research any state and/or province road laws which may affect your usage.
- Tank manufacturer's listed water capacity (WC). Actual propane capacity is 80% of water listing as required by the safety code.

† The chassis manufacturer recommends the installation of a supplemental brake control system to activate the brakes on the vehicle or trailer you are towing. Hitch receiver ratings expressed are maximum for the hitch receiver installed and may require the purchase of additional equipment that is dependent on the weight of the towed load. Consult with hitch receiver manufacturer for further information.

* UVW and OCCC are found on the label containing the federal certification tag in each RV.

RV OWNERCARE**

Limited one-year/15,000-mile coach warranty and three-year/45,000-mile structural warranty, whichever occurs first, and it is fully transferable for the first 12 months. RV OWNERCARE is one of the RV industry's most comprehensive programs and includes systems, appliances, components and construction, with no deductible and no service charge. RV OWNERCARE coverage is provided by a company that will be around in the future to service your needs. See your nearest Fleetwood RV dealer for a full explanation of benefits and restrictions.

CONTACT US

To locate a dealer near you, visit our website at www.fleetwoodrv.com or call 1-800-322-8216. We can also be contacted at Fleetwood RV Customer Relations, P.O. Box 1007, Decatur, IN 46733.

FLEETWOOD RV MOTOR HOME CLUBS

As a Fleetwood RV owner, you're invited to become a member of several Fleetwood RV motor home clubs. Becoming a club member is the perfect way to meet other Fleetwood owners who love to travel across America and share in the RV lifestyle. Visit our website at www.fleetwoodrv.com/owners_clubs to learn more and join the fun.

IMPORTANT—PLEASE READ

Product information, photography and illustrations included in this publication were as accurate as possible at the time of printing. For further product information and changes, please visit our website at www.fleetwoodrv.com or contact your local Fleetwood RV dealer. Prices, materials, design and specifications are subject to change without notice. All weights, fuel, liquid capacities and dimensions are approximate. Fleetwood RV has designed its recreational vehicles to provide a variety of uses for customers. Each vehicle features optimal seating, sleeping, storage and fluid capacities. The user is responsible for selecting the proper combination of loads (i.e., occupants, equipment, fluids, cargo, etc.) to ensure that the vehicle's capacities are not exceeded.



**All 2012 Fleetwood RV motor homes include a 1-year membership to Coach-Net. For complete info, see your Fleetwood RV dealer.

©2011 Fleetwood RV Inc. Printed in USA. Inventory Control Number JAM12F1, 08/11. Model Year 2012, First Edition.

WHY FLEETWOOD RV?



Quality

There's no cutting corners. Skilled craftsmen build every Fleetwood RV for maximum durability and longevity.



Safety

You've got precious cargo. So we've engineered dozens of innovative safety features into our motor homes to give you more peace of mind.



Trust

More people trust Fleetwood RV. After all, we've spent over 60 years perfecting RVs, earning the loyalty of generations of RVers.



Service

Help is nearby with 24/7 emergency roadside assistance through Coach-Net®*. And when you need an upgrade or repair, you'll find Fleetwood RV dealers all across North America ready to assist you.



Passion

We're truly passionate about the RV lifestyle. Fleetwood RV was founded by RV enthusiasts, and that tradition continues today.



Warranty

Exclusive RV ownercare warranty. See your Fleetwood RV dealer for details.